



LK LAB KOREA INC. COMPANY INTRODUCTION

LK LAB KOREA

SCIENTIFIC INSTRUMENTS

Products for Laboratory, Industry and Research

Best Lab **Solution** / Best **R&D Partner**

- 01.** Overview
- 02.** Organization/Vision/Mission
- 03.** History
- 04.** Business Area
- 05.** Our Own Product
- 06.** Certificates & trademarks
- 07.** Strong Point
- 08.** Sales Performance
- 09.** Work Place

LK LAB KOREA

Best Lab Solution Best R&D Partner

Provide all **solutions** for research purposes, as well as **manufacturing**, **exporting**, and **distribution** of research experimental equipment

CEO MinSung Kong

▶ Incorporation Date

30th May 2005

▶ Business Area

Manufacturing and Export,
Wholesale, Retail and Distribution of
Scientific Instruments

▶ Headquarters

office : 77-9, Toegyewon-ro, Toegyewon-eup,
Namyangju-si, Gyeonggi-do, Republic of Korea

factory : 76 Yongjeonggyeongjero 2-gil Gunnae-myeon
Pocheon-si Gyeonggi-do, Republic of Korea

▶ Homepage

<http://eng.lklab.com>

▶ Facility

Headquarters in Namyangju
Factory in Pocheon
Jongro Office Showroom
3rd Factory in Daejun
R&D Center in Hanam City



LK LAB KOREA VISION

As the best supplier of all kinds of scientific equipment and their accessories.

We have the **biggest market share** in Korea.

LK LAB KOREA MISSION

We are doing our best to satisfy our customers with **One-Stop service** system.



Marketing



- Production of printed materials and publications
- Customer communication (SNS Service)
- Planning various events
- Sharing Information through newsletters, etc.

International business



- Import and Export affairs
- Communication work with orders with overseas direct manufacturers
- Identification of domestic market trends, discovery of promising overseas manufacturers, and product sourcing

Sales



- Product Consultation
- Visit counseling and installation
- New product proposal
- Follow-up management (A/S)
- Lead Time management
- Various sales activities

Accounting



- Tax invoice management
- General affairs/personnel/workmanship
- Payment for purchase
- Financial and tax processing
- Management-related support

Logistics



- Packaging and delivery management
- Product and inventory management

Factory



- Product design and manufacturing
- Research/development of new products
- Various technical support (experimental equipment)
- After sales service
- Visiting service for repair and installation

FOR 20 YEARS,
CREATIVE &
ENERGETIC
LKLAB



2003

Foundation of
"LabKorea"



2005

Changed the
Private Company to the
Corporation Company
"LK LabKorea Inc"



2006

Launched
'www.lklab.com'



2008

First comprehensive
catalog production as
'LK LAB KOREA INC.'
Using Encyclopedia type



2009

-Set up the warehouse(660m²)
next to Seoul area
-Open the Jongro Office
as the kind of showroom



2010

set additional
local agency
(Incheon, Gangwon,
Gwangju, Pohang,
Busan, Jinju, Jeju)



2011

Glass Blowing Factory
Built in Jongro-gu



2012

-Obtained ISO9001 &
ISO14001 certification
-Established R&D center
in Gyeonggi Province
-Established Factory
in Pocheon City



2015

Obtained Patent overheat
alarm of temperature
controller



2016

- Establishment of a new logistics center (250m²) in Namyangju-si
- Participation in overseas exhibitions (Arab Lab 2016 Dubai / ANALYTICA 2016 Munich)



2018

- Completion of the second factory (Pocheon Yongjeong Industrial Complex 4,000m², 2,644m² of floor space)
- Arab Lab 2018 exhibition (United Arab Emirates - Dubai)



2017

- Patent registration of 'Reagent Cabinet' (No. 10-1786604)
- Participation in Arab Lab 2017 (United Arab Emirates - Dubai)



FOR 20 YEARS,
CREATIVE &
ENERGETIC
LKLAB



2019

- Participation Arab lab Exhibitions in Dubai
- Korea lab





2020

- Launched 10 new products (Including sterilizers and laboratory refrigerators)



2021

- Patent Publication of 'Locking Devices for High Pressure Sterilizers' (No. 10-2231311)
- Completion of the second logistics center in Pocheon city



2022

- Open NEW Branch in Daejeon City
- Open NEW R&D center in Hanam
- Korea lab 2022



2023

- Launch Brand-new device "CO₂ incubator"
- Launch our own brand consumables
- Participation in Exhibitions (Korea lab 2023 4/18~4/21) (Arab lab 2023 9/19~9/21)



FOR 20 YEARS,
CREATIVE &
ENERGETIC
LKLAB

We serve the **suitable equipment** for research institutes and laboratories through the self-production equipment, **simple ordering** on website, and **consulting services**



- ▶ **Self-production** and importation of scientific instruments
- ▶ Direct supply to various research institutes
- ▶ Wholesale Distribution
- ▶ Improvement of all kinds of laboratory facilities and equipment for the installation.
- ▶ Online sales activities through Internet shopping malls, Operating **more than 20 domestic Sub-Dealer**

Our Own Product



Autoclave,
Steam Sterilizer



Bath & Circulator



CO₂ Incubator



Recirculating Chiller



Clean Bench & BSC

LK laboratory equipment



Tube Furnace,
Program Control



Hotplate



Heating Block



Low Temp. Incubator



Desktop Ball Mill



Forced Convection
Oven



Vacuum Oven



Refrigerator & Freezer

Certificates & trademarks

ISO Cert.



LK lab Korea
(Class of 35)

a research institute affiliated

Management Innovation
Business

Technological Innovation
Business

Trademark



Luke GL
(Class of 9)

LabPlasti
(Class of 9)

Rayhope
(Class of 7)



Venture Company
Confirmation

Environmental Management
ISO 14001

Quality Management
ISO 19001

Medical Device Sales
Declaration Certificate



Rayhope
(Class of 9)

Rayhope
(Class of 11)

Patent



Over temperature
alarm system

Reagent Cabinet

Locking device
for high pressure sterilizer



Technological innovation achieved by LK Lab Korea!

Patent number: 10-1517791

Over temperature alarm system for heterochemical test apparatus

Patent number: 10-1786604

Reagent Cabinet

Patent number: 10-2231311

Locking device for high pressure sterilizer



Run an online shopping mall

www.lklab.com Run an online shopping mall where customers can easily find products and receive information rapidly and purchase products quickly through categories and searches.



Catalog

Through the distribution of a comprehensive product catalog of the encyclopedia method, the customers can find the product information easily and rapidly as offline, and deliver the accurate information and product by sharing the quick information with each agent.



LK laboratory equipment

By managing service from self-production to follow-up management at once, the customers can receive and manage the equipment quickly and fast that they want.



Customized equipment

We deliver a single product that satisfies the customer by directly manufacturing the product that the customer wants other than the specifications listed in the catalog.

Quick product delivery through online ordering & shipping

Quick & Diversity Distribution

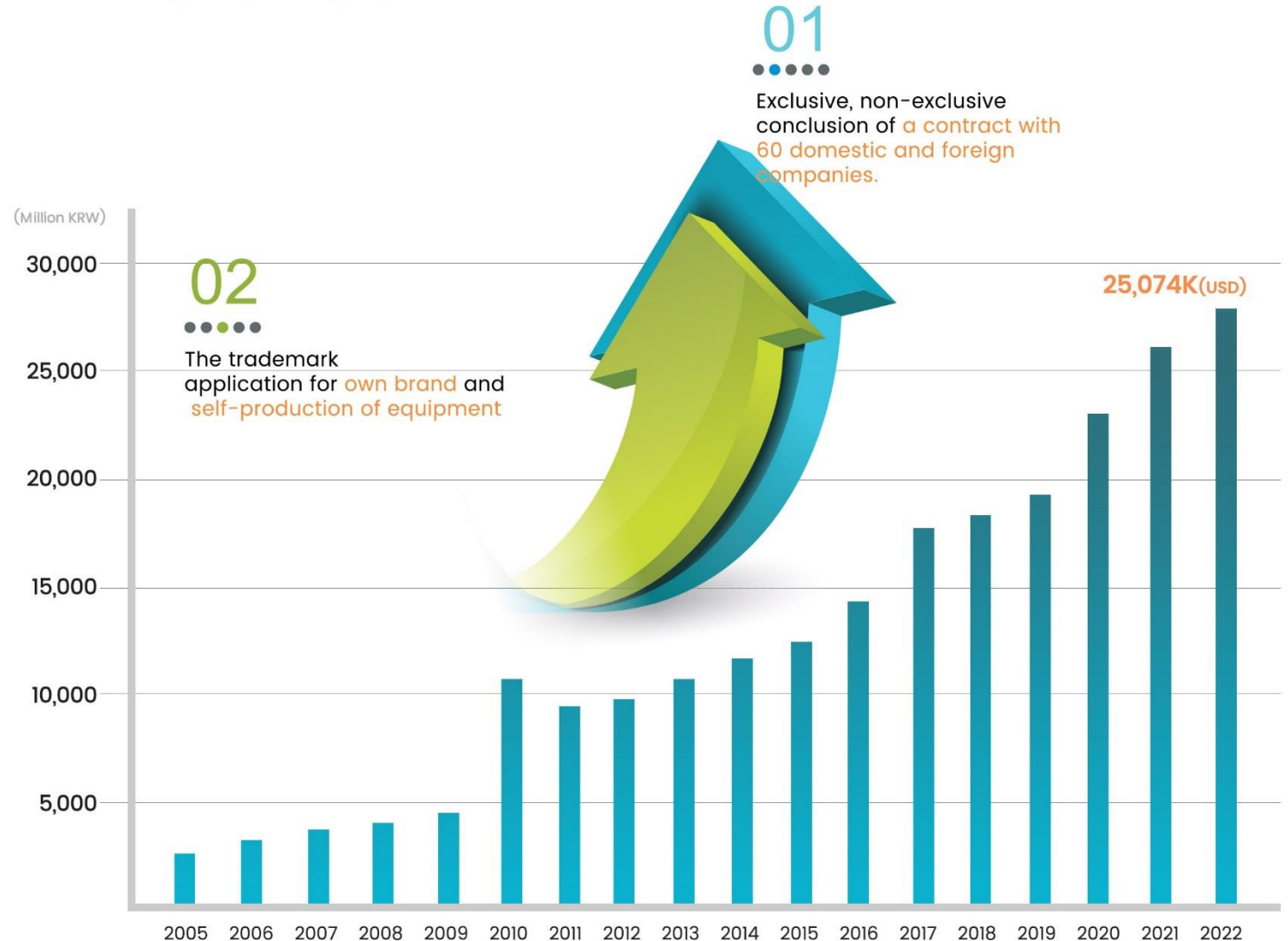
Speed and accurate distribution structure through each agency and catalog distribution.

Sales Performance

Since its foundation, LK LAB KOREA has been recording **the marvel levels of growth** every year as a result of various efforts to make for efficient research by customers such as **supplying various products** from cooperation with overseas businesses, **continuing to issue a revised edition of the catalog**, and **providing sophisticated services**.

1USD = 1150KRW, K = thousand

Year	Sales[USD]
2022	25,074K
2021	22,512K
2020	19,918K
2019	16,667K
2018	15,527K
2017	15,285K
2016	12,588K
2015	10,709K
2014	9,891K
2013	8,991K
2012	8,542K
2011	8,092K
2010	6,294K
2009	3,778K
2008	3,147K
2007	2,965K
2006	2,611K
2005	2,162K



Head Office Sales / Marketing / Warehouse / Equipment Factory / Customer Service

Address 77-9, Toegyewon-ro, Toegyewon-eup,
Namyangju-si, Gyeonggi-do, Republic of Korea

Tel 031-573-4952

Fax 031-527-4958

e-Mail info@lklab.com

In the direction of Toegyewon Elementary School,
the alley between "Phone Outlet 365" and "Jung Si Dang"

[By bus]

After getting off at Toegyewon Elementary School, it takes 1 minute on foot

1156, 1, 1-1, 10-5, 707, 73, 88, 92, 11, 2000, 2000-2

[By subway]

It takes 10 minutes on foot from Exit 2 of Toegyewon Station on the Gyeongchun Line



Pochen City - 2nd Factory A research institute affiliated / 2nd Warehouse

Address 76, Yongjeonggyeongje-ro 2-gil, Gunnae-myeon, Pocheon-si,
Gyeonggi-do, South Korea ZIP Code: 11154

Tel 031-573-4952

Fax 031-571-4958

e-Mail factory@lklab.com

[Scale] 4,000m²



Daejun City - 3rd Factory

Address 401 GAON Bizcenter, 120 Daehwa-ro, Daedeok-gu,
Daejeon, Republic of Korea

Tel 042-335-4952

Fax 042-335-4958

e-Mail info@lklab.com



Hanam City - R&D Center

Address 100, Sinusil-ro, Hanam-si, Gyeonggi-do, Republic of Korea

Tel 070-4276-2007

Fax 031-571-4958

e-Mail kjhong@lklab.com





Thank You!

www.lklab.com